

# The Appleseed

Wenatchee  
Official Newsletter of **Rotary**  
Since 1921



-- THIS WEEK --



**THIS WEEK, JUNE 12, 2025  
at Pybus Event Center**

ZOOM Link <https://zoom.us/j/484306077>  
Watch for text alerts/reminders.

Lunch is available from The Paradise.

**Lunch is available at 11:30 AM,  
lecture begins at NOON.**



#### Menu

10 Fish and Chips

10 Gyros

Submit Appleseed stories [here](#).

**This week 06/12/25 - Humanities WA/ Morality in Medicine**



#### **Morality and Medicine: How Philosophy Can Help with Healthcare Decisions**

The speaker, William Kabasenche, is sponsored by [Humanities Washington](#).

Medical professionals are often asked to make life or death choices. How can humankind's knowledge about what is "good" help? In this talk, explore the intersection of philosophy and healthcare with philosopher William Kabasenche. Does good medical care require a knowledge of ethics? Can an unethical doctor still be effective?

With real-life examples, including issues of informed consent, medical confidentiality, and

conflicts-of-interest, discover what ethical medicine means for those of us who are patients, and how it informs what we can and should expect from our providers. The talk will also look at some examples of more contested issues in healthcare where there is disagreement about what good care looks like. And learn why some of the ethical responsibilities of healthcare providers are directly linked to the provider's success.

**William Kabasenche** (he/him) is a professor of philosophy in Washington State University's School of Politics, Philosophy, and Public Affairs and the Ethics Thread Director for WSU's Elson S. Floyd College of Medicine. His research and teaching focus on ethical issues in the healthcare professions, biomedical research, and biotechnology. He is passionate about nurturing respectful and productive conversations about complicated ethical issues. Kabasenche lives in Pullman.

This talk is presented in partnership with **The Thomas S. Foley Institute for Public Policy and Public Service**, which educates citizens across the state about democratic institutions and public affairs, and is based at Washington State University. For more information, visit The Foley Institute's website.

---

## Last week's news and announcements

### **The Rotary Foundation (TRF) update.**

PP Pete Van Well explained that while we have far exceeded our PolioPlus goal, we are about \$600 short of our 24-25 goal for support of the Annual Fund. Rotarians generously stepped up to meet the shortfall. A total of \$625 in cash was collected, and some members promised to make online donations. Pete is the district polio chair and will become club TRF Chair in July.

### **District 5060 End-of-Year events.**

PP Mike Kintner, our Assistant Governor, gave a list of important upcoming events, some of which can be found in the district calendar on DACdb.

June 11 - Annual General Meeting (Zoom) - 5 PM; [Register here](#).

June 13 - DG Changeover in Kamloops (formal). [Info and register here](#).

June 14-15 - E. Wenatchee Rotary Pike Minnow Derby. [Info and register here](#).

June 21 - Cycle Chelan Bike Ride - [Register and Info](#).

June 28-29 - Cashmere Rotary Pickleball Tourney. [Register and Info here](#).

July 8 - Rotary Night at the Applesox.

### **Presidential Transition June 28.**

PP Gary Provo. The deadline to register for the 2025 Presidential Transition is this Thursday 6/12.. The event is on Saturday, June 28. If you have not done so, **click READ MORE below for details...**

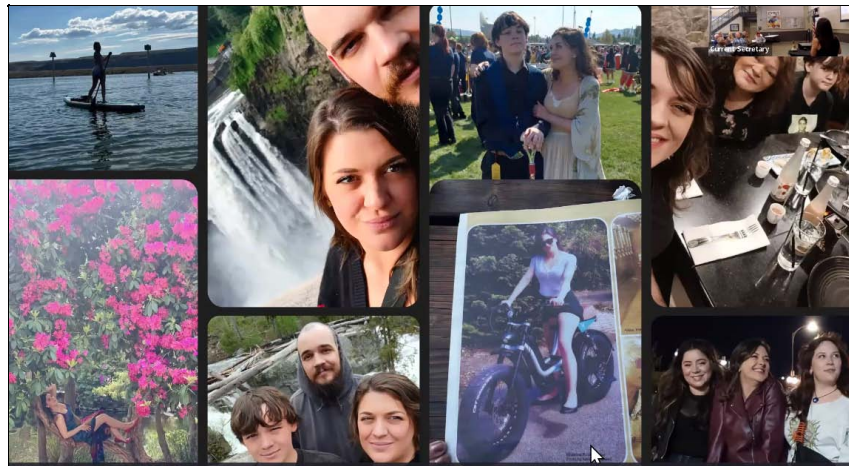
[Read More](#)

---

## Last week, June 5 - Classification Talk (Madeline Barclay)

Madeline Barclay joined the club in June 2024, sponsored by PP Jill Leonard, immediately becoming involved in club operations. She is best known for volunteering to take over our technical and projection duties during club meetings, making her a truly high-value young member of this club.

She used an excellent PowerPoint, jam-packed with family photos to talk about her life, which began in Alaska but has led her to many locations in the northwest. Her guest was former member **TW "Chip" Small**, well-known retired Superior Court Judge. Madeline has had the pleasure of assisting Chip with his book publishing. Many of her images are shown below.



## December 29, 1991

**First daughter of  
Morris & Charlene Barclay**

I was named after my Great Grandmother and Grandmother's middle names, Madeline. Born 11:45pm at Providence Hospital in Anchorage, Alaska. Luckily past my Christmas day due date. I have two little sisters, and was raised the oldest. I had an older half brother from my mom, who passed away this year.

[Read More](#)

### **Greeters, Calendar & Other Notes**

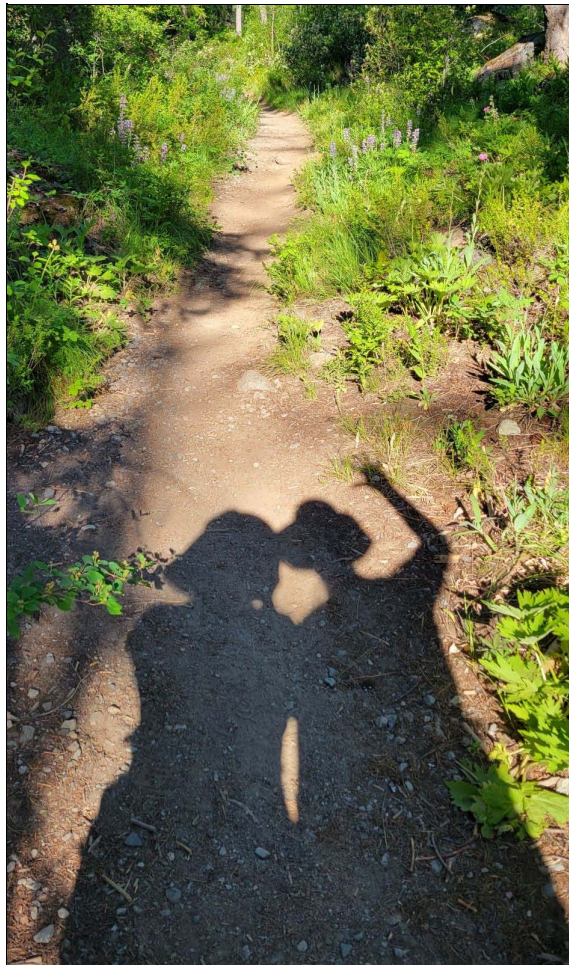
#### **Enviro Girls having Fun**

Confluence and Wenatchee club members did a morning of Pollinator Garden service on June 6; having fun while doing good (from Natalie)





The latest Pair and Share  
(Natalie & Kathy, also having fun on Ingalls Creek Trail)






View [ATTENDANCE](#) for recent meetings.

## Greeters

(List changes weekly)

[Greeter Guidelines](#)

**If you miss your turn, please greet at your next meeting!**  
**Any member can greet at any meeting; jump in!**

 6/12/2025	 <b>Allan</b>	 <b>Nancy</b>	 <b>Kathy</b>
6/19/2025	Gutierrez-Zamora	Harrison	Heminger

Check out the upcoming events for the Club, District 5060, and Rotary International.

<p><b>Calendar of Events</b> (log into DACdb for full calendar)</p> <p><b>June</b></p> <p><b>20-25- RI Convention Calgary</b> <a href="#">Calagary, June 22-25</a></p> <p><b>28 - Club Presidential Changeover</b> (aka President's roast)</p> <p>see stories/calendar</p>
<p>Monthly Board meetings 3rd Tuesday, 4 PM Contact the <a href="#">Secretary</a> for more info.</p>
<p>All members are welcome.</p>
<p><b>Click READ MORE below for ways to donate!</b></p>



## The Wenatchee Rotary Club

[A non-profit corporation as of January 11, 2018](#)



*"Service Above Self"*

Club address -

PO Box, 1723, Wenatchee, WA 98807-1723

Email [WenatcheeRotary227@gmail.com](mailto:WenatcheeRotary227@gmail.com)

Wenatchee Rotary Foundation address -

[P.O. Box 4613, Wenatchee, WA, 98807](#)

**Donations....**

[Read More](#)

---